



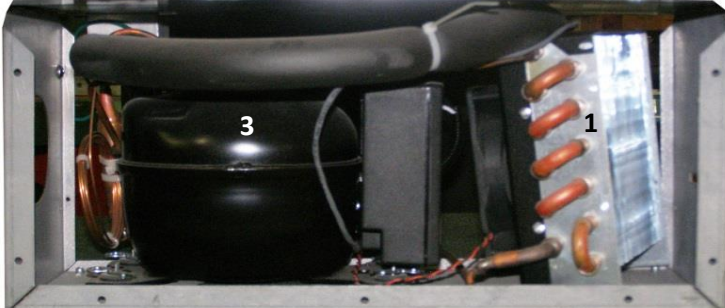
### Top View

- 1) Frame 26 c/w frame screw (12), frame gasket
- 2) Door 26 c/w door gasket 26, hinge bearing, panel (black) \*Not Shown\*
- 3) Hinge Assembly c/w hinge left, hinge right, hinge pin (2), hinge screw (12)
- 4) Evaporator TL2500 c/w capillary tube, suction line, armaflex
- 5) Thermostat Plus c/w knob, case, wire 45 (grey)
- 6) Door Handle TL2500
- 7) Accessory Bag c/w manual, ice cube tray, mounting hole plugs (4)  
\*\*Not Shown\*\*



### Base Views

- 1) Condenser T2500 c/w mounting clips & screws
- 2) Base 23 c/w screws
- 3) bd3.5f Compressor c/w rubber feet (4), compressor clip (4)
- 4) Fridge Drier
- 5) Electronic AC/DC\* c/w red wire 11, black wire 11
- 6) Cabinet TL2500
- 7) Fan Assembly c/w fan12, fan shroud
- 8) Speed Resistor (Optional) No resistor=low speed, black resistor=medium speed, red resistor=high speed
- 9) AC Receptacle c/w fuse 4, wire harness
- 10) AC Cord 115 optional 220
- 11) Pipe Cover



### Unit View

