



**F Plate configuration**, available in 1, 2 or our most efficient 3 plate design as shown.

**Dimensions:**

16 in (406mm) x 10 in (254mm)

Plates can be separated up to 18in (457mm)

*Used for all refrigerator or all freezer or a spill over combination of refrigerator and freezer.*



**RT6 freezer box** (may be mounted vertical or horizontal.

Internal volume .54 cuft (15.3lts)

**Dimensions:**

14in (356mm) long x 6.75in (172mm) high x 11in (279mm) deep

**RT4 freezer box**

**Dimensions:**

10.5in (267mm) long x 12.5in (317mm) high x 6.5in (165mm) wide



*Used for a refrigerator that requires a small freezer compartment in the same space.*

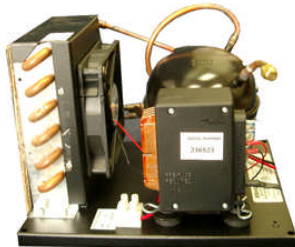


**FL Plate and FM Plate**, designed to be bent to fit your application.

**FL Dimensions:** 36in (914mm) x 15in (381mm)

**FM Dimensions:** 32in (813mm) x 11.5in (292mm)

*Used in larger refrigerators or freezers.*



**LT201 Condensing unit**, designed to couple up with our cooling plates.

Variable speed compressor

Reusable couplings between unit and cooling plates.

High efficient air cooled condenser for high ambient applications.

134a refrigerant, 12-24 volt DC.

Standard line set is 12ft (3.66M)

**Dimensions**

7 ½ (191mm) H

11 (279mm) L

9 (229mm) W

**Custom Plate configurations, Line sets and Compressor capacity available  
Call for details**

Mobile Refrigeration Specifically Designed for  
Marine, RV, Trucking, Solar and Off Grid applications